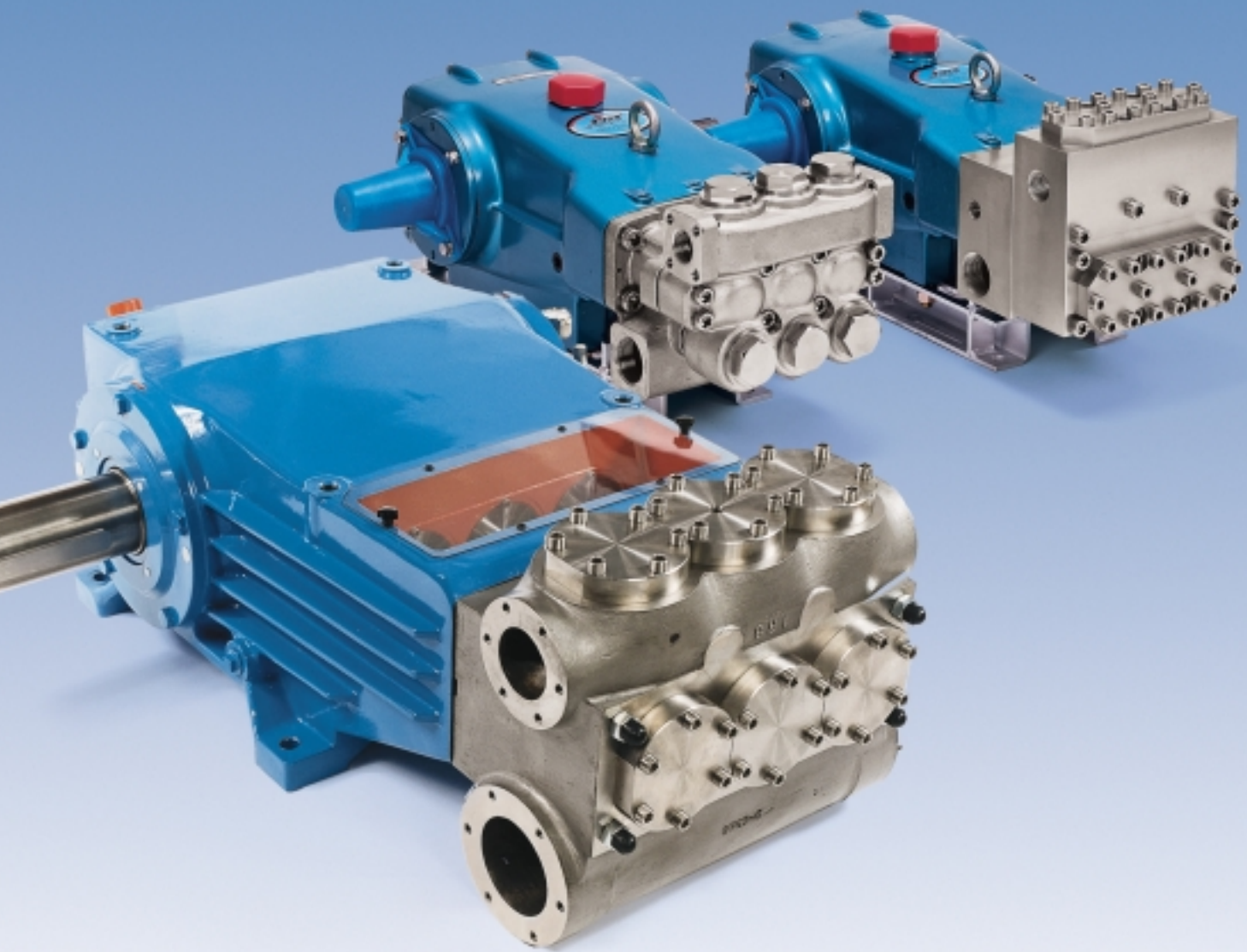




*The World's Most Dependable Pumps*

# STAINLESS STEEL PRODUCTS



***Industrial Specialty Pumps***  
***“The Pumps with Nine Lives”***

# Stainless Steel Products offer Greater Compatibility and Life

## The Pumps with NINE LIVES

Over the past 30+ years, CAT PUMPS has earned recognition in the industrial and specialty markets by providing the longest lasting, most trouble-free high pressure pumps available.

CAT PUMPS has considered the requirements of many industrial applications and developed a complete line of stainless steel pumps to meet these needs. The design features and materials selection assure long-lasting performance for the industrial market.

## Why Should You Buy a CAT PUMP?

The answer is simple. It will cost you far less to invest in a CAT PUMP. Your primary business concern is maximum up-time, for maximum output and maximum return on your investment. At CAT PUMPS, we believe in producing only the highest quality, longest lasting pump possible and we have taken every step to assure unsurpassed quality with every pump.

CAT PUMPS are ISO 9001 certified. Our special materials and spring reinforced, lipped seal design offer longer life and better performance. Extra steps are taken to assure our high-density, solid ceramic plungers are concentric. Then they are specially surface polished to further enhance the life of the seals and assure the original performance is attained each time servicing is done. These extras cost little more, but translate into less downtime, lower servicing costs and greater return on your investment.

The special Block-Style Stainless Steel models provide added life in harsh applications. The "K" models offer special flushing and cooling ports in the inlet manifold to allow the pumping of hi-temp liquids and the containment of undesirable or hazardous emissions. Their design also permits high inlet pressures to accommodate high vapor liquids such as CO<sub>2</sub>.

The large capacity "R" series are API 674 compliant to meet the needs of the onshore and offshore oil and gas markets. Standard liquid-end construction is 316L stainless steel or Duplex stainless steel.

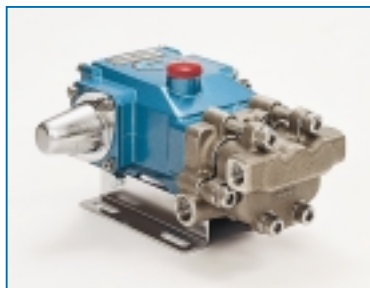
For convenience, all pumps are available as custom engineered complete Power Units that include a heavy-duty steel or stainless base, pump, drive (electric, gas or diesel), and system accessories. Some models are available with overhead motor mounts for an ultra compact footprint. These Power Units are fully tested and available with very short lead times.

## Applications

- Salt Water Reverse Osmosis
- Turbine Misting/Cooling
- Glycol Injection
- Methanol Transfer
- Crude Oil Transfer
- Oil Well Stimulation
- Acidizing Oilwells
- Hydrocarbon Condensate
- Pipeline Pig Purging
- Pharmaceutical Products
- Waste Site Leachate Extraction
- Homogenization
- DI (Deionized water) Spraying
- Phosphotizing
- Lipid Extraction
- Chemical/Wastewater Injection
- Liquid CO<sub>2</sub>
- Boiler Feed
- Food Products Processing

## Standard 316L Stainless Steel Pumps

Pump Model	Flow GPM	Pressure PSI	Pump RPM	Elec. HP
3CP1221	4.2	2000	1725	5.7
3CP1231	2.4	2000	1725	3.3
3CP1241	3.6	2000	1725	4.9
5CP6221	6.0	2000	1400	6.6
5CP6241CS	4.0	2000	1725	4.4
5CP6251	5.0	2000	1725	5.5
231	2.42	1500	1725	2.5
241	3.6	1200	1725	3.0
271	3.5	1500	1437	3.6
271 Alternate	4.2	1000	1725	2.9
311	4.0	2200	950	6.0
311 Alternate	5.0	1500	1190	5.1
341	4.0	1800	1725	5.0
351	5.0	1500	1725	5.1
651	7.0	3000	1000	14.4
661	10.0	3000	1429	20.6
1051	10.0	2200	958	15.1
1051 Alternate	12.0	1800	1150	14.8
2531	25.0	1000	1088	17.1
3521	23.0	2000	800	31.6
3531	36.0	1200	800	29.7
3541	45.0	1000	800	30.9
6761	60.0	1200	520	49.4
6761 Alternate	70.0	1000	600	48.0



3CP



5CP



231, 241, 271



311



1051



2531



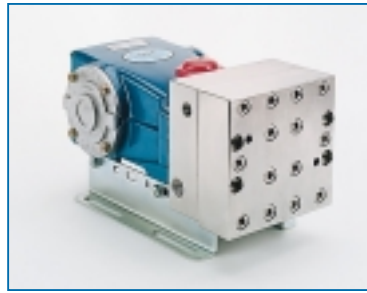
3521, 3531, 3541



6761

## Block-Style 316L Stainless Steel Pumps

Pump Model	Flow GPM	Pressure PSI	Pump RPM	Elec. HP
781, 781K	4.5	5000	1700	15.4
681, 681K	7.0	3000	1000	14.4
1851, 1851K	10.0	2200	958	15.1
1861, 1861K	10.0	3000	1429	20.5
2831, 2831K	21.0	1200	914	17.3
3801, 3801K	9.0	5000	800	30.9
3811, 3811K	14.0	3000	800	28.8
3821, 3821K	23.0	2000	800	31.6
3831, 3831K	36.0	1200	800	29.7
3841, 3841K	45.0	1000	800	30.9
6811, 6811K	15.0	5000	600	51.5
6821, 6821K	25.0	3000	615	51.5
6831, 6831K	40.0	2300	625	63.0
6841, 6841K	48.0	2000	615	65.8
6861	60.0	1200	520	49.4
6861 Alternate	70.0	1000	600	48.0
6861K	60.0	1200	520	49.4
6861K Alternate	70.0	1000	600	48.0



781



681, 1851, 1861



2831



3801



3831



6811-6831

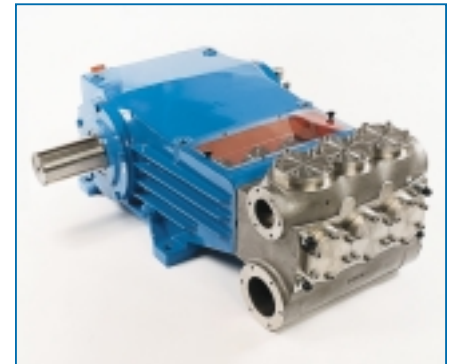


6841, 6861

## "R" Series 316L and Duplex Stainless Steel Pumps

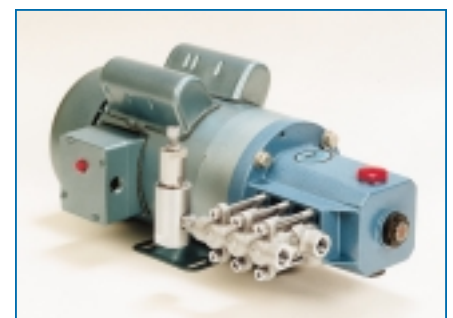
Pump Model	Flow GPM	Pressure PSI	Pump RPM	Elec. HP	Pump Model	Flow GPM	Pressure PSI	Pump RPM	Elec. HP
<b>316L/Duplex SS</b>					<b>316L/Duplex SS</b>				
76R025, 77R025	13.0	10,000	450	100	151R060, 152R060	100	2700	310	200
76R025, 77R205 API	11.5	10,000	400	100	151R060, 152R060 ALT	115	2300	360	200
76R045, 77R045	43.0	3000	450	100	151R060, 152R060 API	86	2700	270	200
76R045, 77R045 API	38.0	3000	400	100	151R080, 152R080	160	1650	280	200
76R065, 77R065	90.0	1500	450	100	151R080, 152R080 ALT	200	1300	355	200
76R065, 77R065 ALT	100.0	1000	500	100	151R080, 152R080 API	150	1650	270	200
76R065, 77R065 API	80.0	1500	400	100	151R100, 152R100	260	1000	295	200
					151R100, 152R100 ALT	320	825	360	200
					151R100, 152R100 API	240	1000	270	200

API=API674 Performance ALT=Alternate Performance

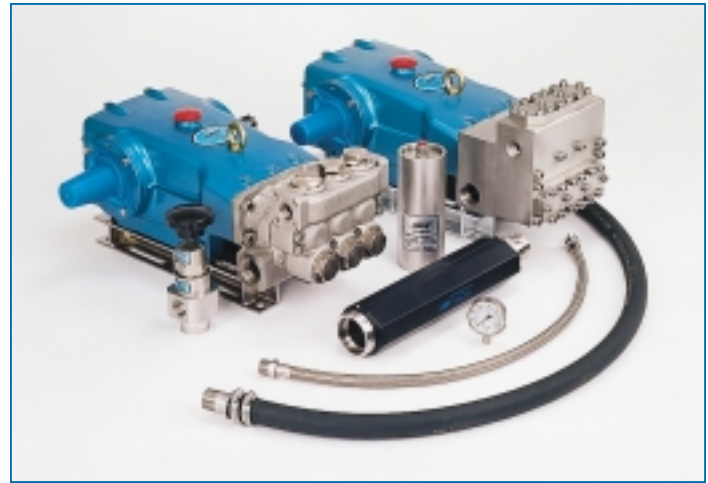
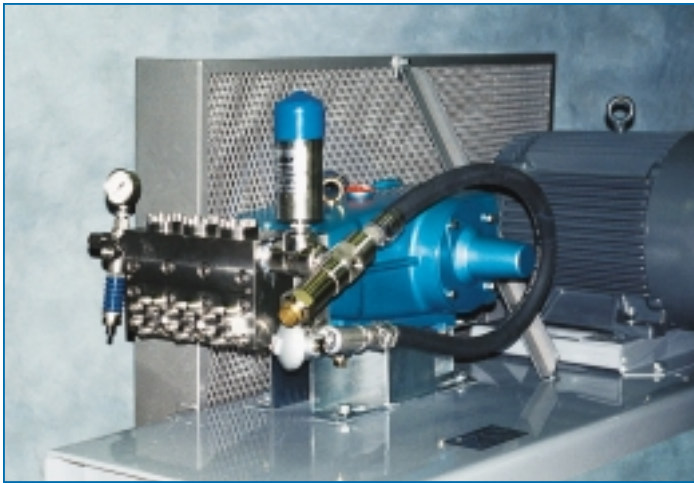


## Direct-Drive 316L Stainless Steel Pumps

Pump Model	Flow GPM	Pressure PSI	Pump RPM	Elec. HP
2SF05SEEL	0.5	1200	1725	0.4
2SF10SEEL	1.0	1200	1725	0.8
2SF25SEEL	2.5	1200	1725	2.1
2SF29SEEL	2.9	1200	1725	2.4
2SF35SEEL	3.5	1200	1725	2.9



# Stainless Steel Pump Accessories



Pump Model	Regulator	Pressure Gauge	Relief Valve	Pulsation Dampener	C.A.T.	Flexible Discharge Hose	Flexible Inlet Hose
<b>STANDARD</b>							
231, 241, 271	7002.100, 7070, 7076	6087, 6097	7036, 7531.100	6029, 6030, 6031	711500	990859	990845
311, 341, 351	7001.100, 7002.100, 7070, 7076	6087, 6097	7036, 7531.100	6029, 6030, 6031	711500	990859	990845
3CP1221, 1231, 1241	7002.100, 7003.100	6087, 6097	7036, 7531.100	6029, 6030, 6031	711500	990859	990845
5CP6221, 6241CS, 6251	7012.100, 7076	6087, 6097	7036, 7531.100	6029, 6030, 6031	711500	990859	990845
651	7013.100, 7023.100	6087	7036, 7533.100	701501	711500	990852	990846
661	7013.100, 7023.100	6087	7036, 7533.100	701501	711500	990852	990846
1051	7012.100, 7013.100, 7023.100	6087	7036, 7531.100	6013, 6014, 701501	711500	990852	990846
2531	7021.100, 7022.100, 7031.100	6085	7036, 7531.100	6013, 6014, 701502	714500	990853	990848
3521	7022.100, 7023.100	6087, 6097	—	6013, 6014, 701502	714500	990854	990847
3531	7031.100, 7061, 7063	6085	—	6015, 701503	714500	990854	990847
3541	7061, 7063, 7095, 7096	6085	—	6015, 701503	717500	990854	990847
6761	7061, 7063, 7073, 7095, 7096, 7097	6085, 6097	—	701503	717500	990855	990850
<b>BLOCK-STYLE</b>							
681, 681K	7013.100, 7023.100	6087	7036, 7533.100	701501	711500	990852	990849
781, 781K	7066	6087	7536.100	701506	711500	990857	990845
1851, 1851K	7012.100, 7013.100, 7023.100	6087	7036, 7533.100	6013, 6014, 701501	711500	990852	990849
1861, 1861K	7012.100, 7013.100, 7023.100	6087	7036, 7533.100	6013, 6014, 701501	711500	990852	990846
2831, 2831K	7021.100, 7022.100, 7031.100	6085	7036, 7531.100	6013, 6014, 701502	714500	990853	990848
3801, 3801K	7066	6098	7536.100	701506	711500	990857	990847
3811, 3811K	7023.1	6087	7036, 7533.100	701501	711500	990854	990847
3821, 3821K	7022.100, 7023.100	6087, 6097	—	6013, 6014, 701502	714500	990854	990847
3831, 3831K	7031.100, 7061, 7063	6085	—	6015, 701503	714500	990854	990847
3841, 3841K	7061, 7095, 7096	6085	—	701503	714500	990854	990847
6811, 6811K	7066, 7536.100	6087	7536.100	701506	711500	990858	990847
6821, 6821K	7023.100, 7033.100	6087	—	701502	714500	990854	990847
6831, 6831K	7073, 7096	6087, 6097	—	701503	717500	990854	990847
6841, 6841K	7063, 7096	6087, 6097	—	701503	717500	990855	990851
6861, 6861K	7061, 7063, 7073, 7095, 7096	6085, 6097	—	701503	717500	990855	990851
<b>"R" SERIES</b>							
Consult factory for required accessories.							
<b>DIRECT-DRIVE</b>							
2SF05SEEL	7200	6097	7036, 7531.100	6031	711500	990859	990845
2SF10SEEL	7200	6097	7036, 7531.100	6031	711500	990859	990845
2SF25SEEL	7200	6097	7036, 7531.100	6031	711500	990859	990845
2SF29SEEL	7200	6097	7036, 7531.100	6031	711500	990859	990845
2SF35SEEL	7200	6097	7036, 7531.100	6031	711500	990859	990845

Products described hereon are covered by one or more of the following U.S. patents 3558244, 3652188, 3809508, 3920356, 3930756 and 5035580

Feb 2001 2106

**World Headquarters**  
**CAT PUMPS**  
 1681 - 94th Lane N.E. Minneapolis, MN 55449-4324  
 Phone (763) 780-5440 — FAX (763) 780-2958  
 e-mail: sales@catpumps.com  
 www.catpumps.com

**International Inquiries**  
 FAX (763) 785-4329  
 e-mail: intl@catpumps.com



*"The World's Most Dependable Pumps"*

**CAT PUMPS (U.K.) LTD.**  
 1 Fleet Business Park, Sandy Lane, Church Crookham, Fleet  
 Hampshire GU13 0BF, England  
 Phone Fleet 44 1252-622031 — Fax 44 1252-626655  
 email: sales@catpumps.co.uk

**N.V. CAT PUMPS INTERNATIONAL S.A.**  
 Heiveldekens 6A, 2550 Kontich, Belgium  
 Phone 32-3-450.7150 — Fax 32-3-450.7151  
 e-mail: cpi@catpumps.be www.catpumps.be

**CAT PUMPS DEUTSCHLAND GmbH**  
 Buchwiese 2, D-65510 Idstein, Germany  
 Phone 49 6126-9303 0 — Fax 49 6126-9303 33  
 e-mail: catpumps@t-online.de www.catpumps.de